

BALL VALVES MOON [MN]
PN16/40 DN15 - DN100 body from BAR
PN16 DN40 - DN100 body from CASTING

From BAR [MNB]

From Casting [MNC]



Atex **CE** **Ex** II 2 G D*
 * on request

MAIN STANDARD FEATURES

- CONSTRUCTION:** A351 CF8M (AISI 316) (body from casting)
 AISI 316L (body from bar)**
 A351 CF8 (AISI 304) (body from casting)
 AISI 304 (body from bar).
- STANDARDS:** BS EN ISO 17292:2004.
- CERTIFICATION:** FIRE SAFE according to BS 6755 – API 6 FA – API 607
 DVGW for gas (-20°C + 60°C) (only PTFE).
- SIZE RANGE:** DN15 - DN100
 (DN125, 150 / 200 model SELENE).
- PRESSURES:** PN16/40 DN15 - DN100 body from BAR
 PN16 DN40 - DN100 body from CASTING.
- TEMPERATURE LIMITS:** -20°C / +180°C (PTFE).
- CONNECTIONS with flanges:** UNI-EN 1092 and DIN2501 BL.1.
- FLANGE DRILLING:** metric.
- STEM:** Anti blow out with anti-static device.
- ANTISTATIC DEVICE:** starting from DN25 (upon request DN15-DN20).
- SEAL:** triple patented stem-packing with labyrinth effect and automatic adjustment by Belleville washers.
- UPPER CONNECTION:** ISO 5211.
- OPERATOR:** lever. Available colours: black, yellow.

GENERAL APPLICATIONS:

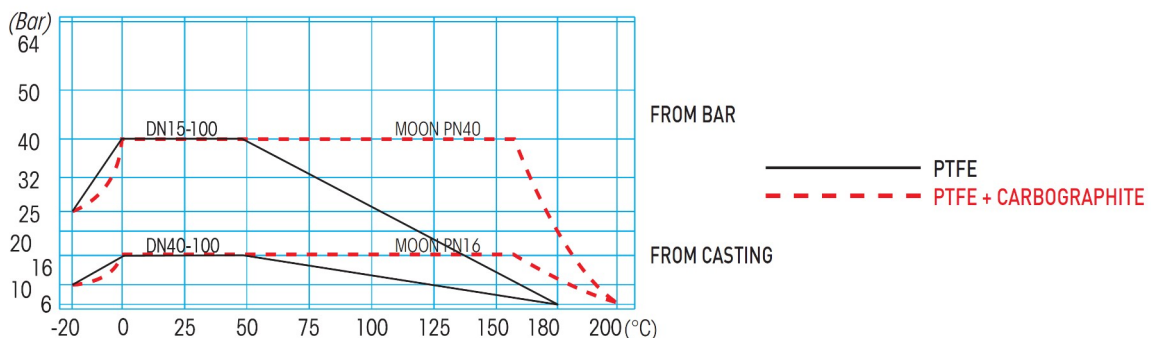
ON-OFF valve for: chemical products, food plants, distribution lines for gas, air, water. Suitable for Vacuum (not high vacuum) (see page 470), steam up to 200°C with PTFE+CARBOGRAPHITE SEATS.

- Silicon free.

SPECIAL EXECUTIONS:

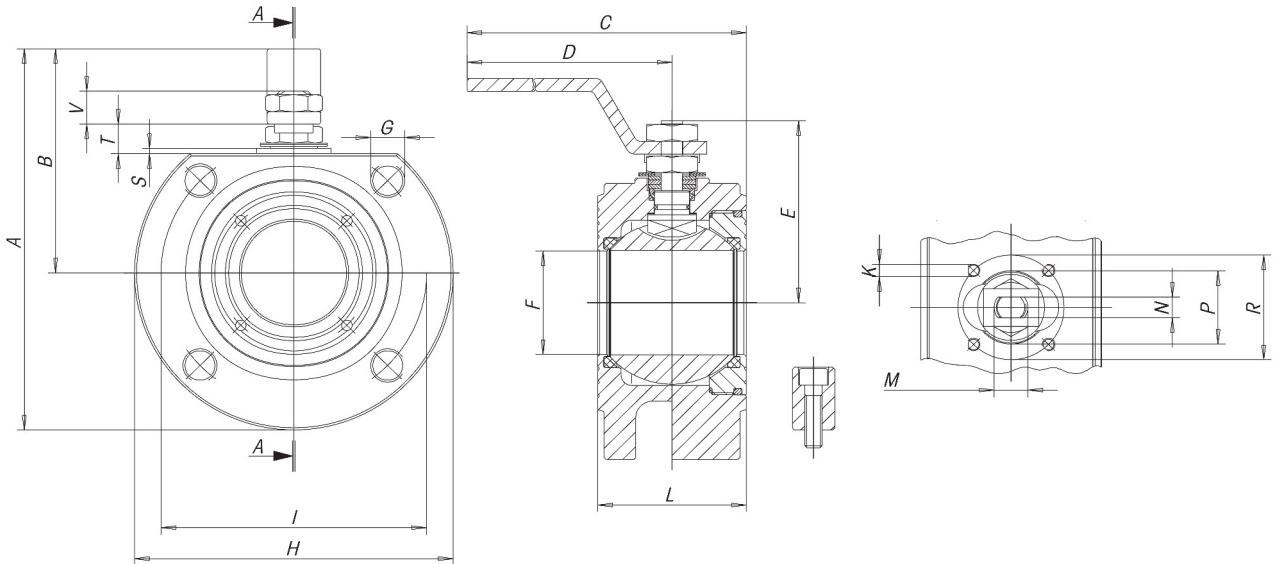
- PTFE+15% GLASS FIBRE: +190°C.
- PTFE + CARBOGRAPHITE: +200°C (optimum from 60°C to 200°C).
- PTFE with metal core (on request).
- Integral seal in PTFE DN15 - DN100 from bar (max. 16 bar).
- PN40 (DN40 - DN100) (from bar).
- PLAIN AND THROUGH DRILLED FLANGE DRILLING.
- Reduction gears with manual operator.
- Stem extensions 50mm and 100mm.
- Heating jacket (see series MOON CR).
- Ball with relief hole
- Degreased for oxygen service.
- Body - ring nut - stem - ball made of AISI316L.
- Bottom valve (tie-rods are also supplied).
- For further special requests please consult our technical /commercial service.
- PN64.

TEMPERATURE LIMITS:



BALL VALVES MOON [MN]
PN16/40 DN15 - DN100 body from BAR
PN16 DN40 - DN100 body from CASTING

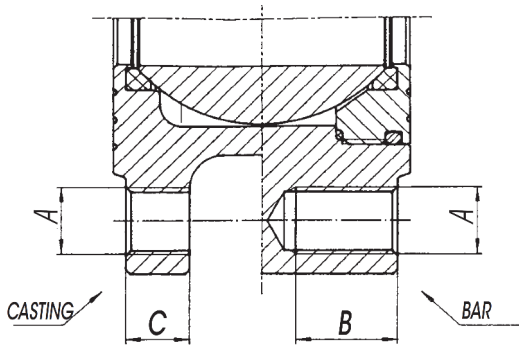
Dimensions



SIZE	A	B	C	D	E	F	G	H	H BAR/STANGE	K	I	L PN 16/40	L ND PN 16/40	M	N	P	R	S	T	V	N° G	PN	ATT. ISO	WEIGHT g.	Kv
DN15	110	65	160	140	48	15	M12	90	90	M5	65	35	35	M10	6	25	36	2	8	9	4	40	F03	1345	20
DN20	120	70	160	140	51	20	M12	100	100	M5	75	38	38	M10	6	25	36	2	8	9	4	40	F03	1810	60
DN25	137	82	200	180	62,5	25	M12	110	110	M5	85	43	43	M12	8	30	42	2	11,5	11,5	4	40	F04	2505	100
DN32	150	85	205	180	67	32	M16	130	130	M5	100	54	54	M12	8	30	42	2	9,5	11,5	4	40	F04	3995	130
DN40	172	102	260	230	80	40	M16	150	140	M6	110	60	66	M16	10	35	50	2,5	14	16	4	16	F05	4190	170
DN50	185	110	265	230	87	50	M16	165	150	M6	125	70	83	M16	10	35	50	2,5	14	16	4	16	F05	5790	280
DN65	225	137,5	400	350	122,5	65	M16	185	180	M8	145	95	103	M22x1,5	14	49,5	70	3	18,7	23,8	4	16	F07	10200	510
DN65	225	137,5	400	350	122,5	65	M16	185	180	M8	145	95	103	M22x1,5	14	49,5	70	3	18,7	23,8	8	40	F07	13200	510
DN80	245	150	410	350	132,5	78	M16	200	200	M8	160	122	122	M22x1,5	14	49,5	70	3	18,7	23,8	8	16	F07	13700	770
DN100	275	165	450	400	148,5	96	M16	220	220	M10	180	140	153	M27x2,0	16	70	102	3	22,2	25,3	8	16	F10	20000	1200
DN100	275	165	450	400	148,5	96	M20	235	235	M10	190	140	153	M27x2,0	16	70	102	3	22,2	25,3	8	40	F10	24000	1200

BALL VALVES MOON [MN]
PN16/40 DN15 - DN100 body from BAR
PN16 DN40 - DN100 body from CASTING

DRILLING UNI-EN1092



SIZE	A	B (PN40)	C (PN16)
DN15	M12	14	0
DN20	M12	16	0
DN25	M12	16	0
DN32	M16	18	0
DN40	M16	18	13
DN50	M16	18	15
DN65	M16	20	15
DN80	M16	24	17
DN100	M16	20	17
DN100	M20	24	0

Torque values - Nm | safety factor excluded

PN - bar	DN size	15	20	25	32	40	50	65	80	100
	0		4	7	10	16	25	35	55	75
16		4.8	8.5	11.3	19	28	39	59	84.5	168
25		5.2	9.1	12	20.5	29.5	41.5	62.5	92	180
40		6	10.5	13	22.5	31.5	44	67	99	195

The values in NM may vary depending on the seat material, temperature and type of fluid. For reliable operation of various types of actuators, in different working conditions, is recommended a safety factor of 1.5.

NOTES:

The valves presented in this catalog are manufactured in the EU by Effebe Spa according to specifications:

