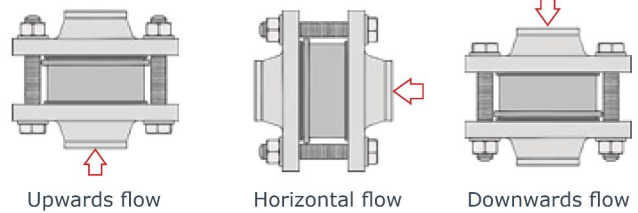


GH DN125 - 200 [5" – 8"] Pmax: 25bar

Features and Advantages

Little dimensions and low weights.
 Face to face acc. to **DIN EN 558-1 Series 49 (DIN 3202 K4)**.
 Opening pressure from 10 to 500 mBar.
 Usable also as vacuum breaker, overpressure and bottom valve.
 No leakage with soft seat.
 acc. to DIN 3230 BN3 with metallic seat.
 Low head losses.

To be installed in any position



GH 011 - GH 015

P max: 25 Bar

Flange:

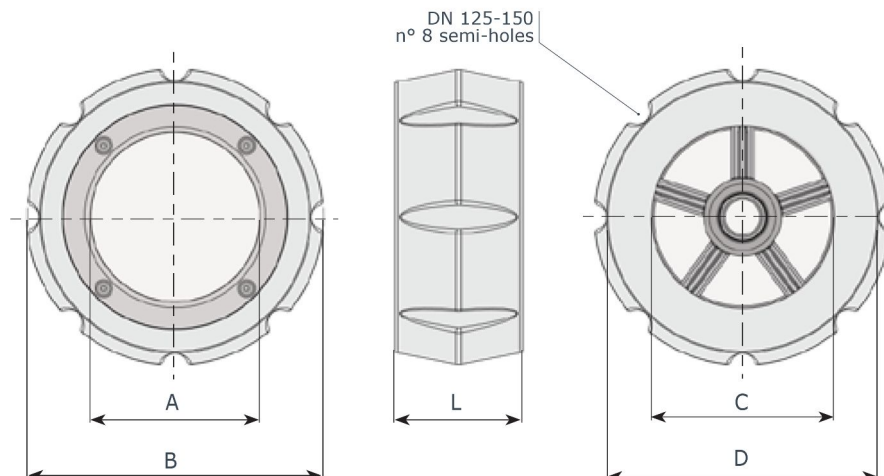
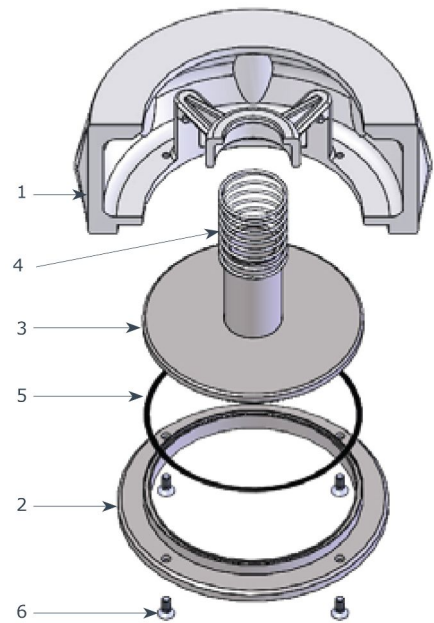
DN 125÷200 PN 10÷25, A150

This type of valve cannot be used with spirometallic packing.

Certifications:



item	q.ty	part	GH 011	GH 015
			material	material
1	1	body	• ASTM A216 WCB	• A351 - CF8M (AISI 316)
2	1	seat	• A240 (AISI 316L)	• A240 (AISI 316L)
3	1	disc	• A240 (AISI 316L)	• A240 (AISI 316L)
4	1	spring-standard on request	• AISI 316	• AISI 316 • Hastelloy C4
5	1	O-Ring	• NBR • EPDM • FKM • PTFE	• NBR • EPDM • FKM • PTFE
6	4	screw	• A182 (AISI 316)	• A182 (AISI 316)



DN	125	150	200
A	120	140	183
B	210	242	273
C	125	150	200
D	192	220	-
L	90	106	140
GH 011 Kg	8.1	12.3	19.0
GH 015 Kg	8.2	12.5	19.3

Spring table

minimum opening pressure with standard springs				
flusso	DN	125	150	200
△	mBar	34	36	36
▷	mBar	22	23	27
▽	mBar	17	18	18
△ without spring	mBar	8	9	10

Opening values may vary ±10%

special spring table			
DN	125	150	200
10 mBar	Y	Y	Y
20 mBar	Y	Y	Y
30 mBar	Y	Y	Y
50 mBar	Y	Y	Y
100 mBar	Y	Y	Y
200 mBar	Y	Y	Y
300 mBar	Y	Y	Y
500 mBar	Y	Y	Y

Y = available
 N = not available

Temperature - pressure diagram

a NBR T_{MAX} = 95°C

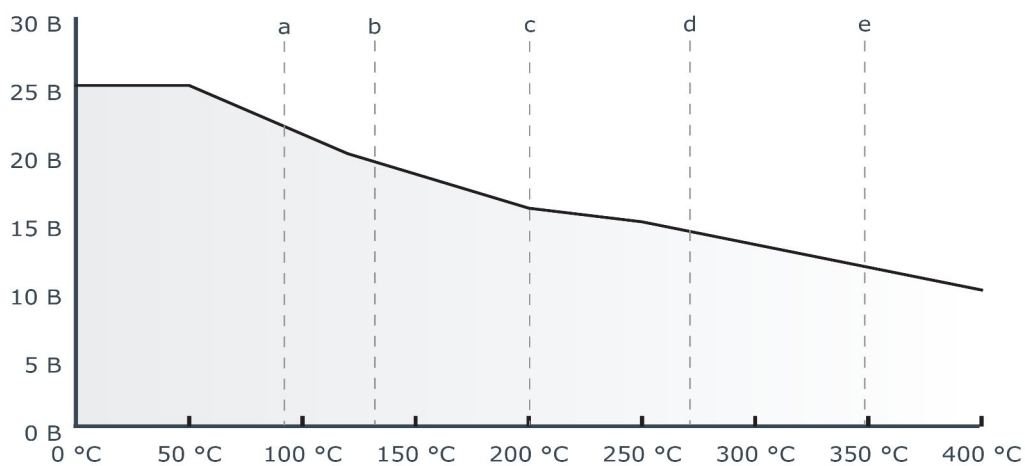
d spring AISI 316 T_{MAX} = 250°C

b EPDM T_{MAX} = 130°C

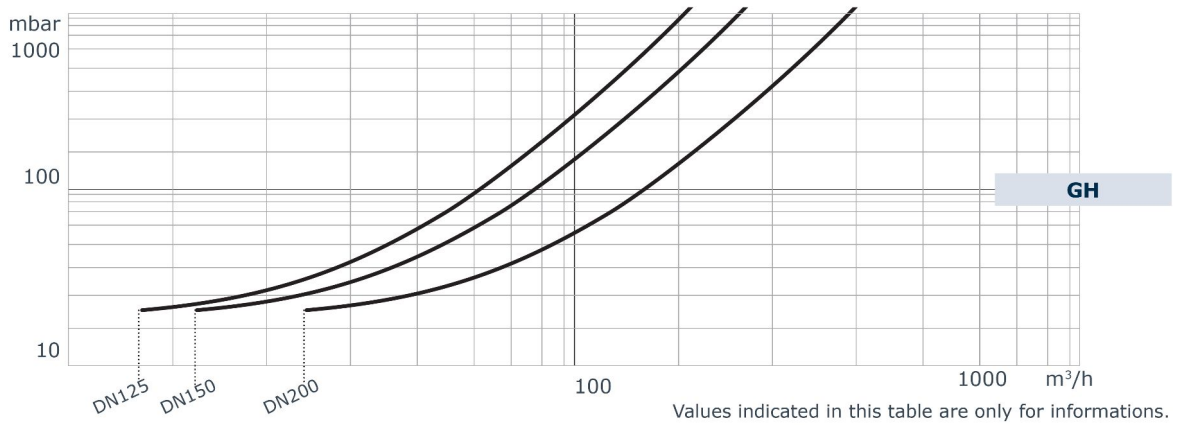
e spring HASTELLOY C4 T_{MAX} = 350°C

c FKM T_{MAX} = 200°C

PTFE



Head losses (H2O - 20°C - horizontal flow, standard spring)



Formula for calculation of equivalent flow rate to H2O

For different liquid, gas or steam head losses are determined by equivalent water flow rate, as follows:

$$Q_e = Q \sqrt{\frac{d}{1000}}$$

Q_e equivalent water flow (m³/h o l/s)

Q fluid flow (m³/h o l/s)

d fluid specific gravity (Kg/m³)



NOTES:

The valves presented in this catalog are manufactured in the EU by Ghibson Italia srl. according to our specifications