

## ARTEMIS [ARS] - Wafer



Atex   II 2 GD\*  
\* on request

## MAIN STANDARD FEATURES

### CONSTRUCTION:

- **GENERAL SPECIFICATIONS:** BS EN 593 - (BS 5155) - MSS SP67 - API 609.
- **DIAMETERS:** DN40 - DN300.
- **CONNECTION WITH FLANGES UNI EN 1092:**  
PN6 - PN10 - PN16 DN40 - DN300
- **CONNECTION WITH FLANGES ANSI 150:**  
DN40 - DN300.
- **FACE TO FACE DIMENSIONS IN CONFORMITY WITH:**  
BS EN 558 - ISO5752 - MSS SP67 - API609 - DIN3202/3-K1.
- **TOP FLANGE:** drilling ISO5211.
  
- **OPERATION DEVICE:** lever DN40 - DN200,  
gear DN250 - DN300.
- Tested for vacuum at 900mbar.

## MAXIMUM WORKING PRESSURE

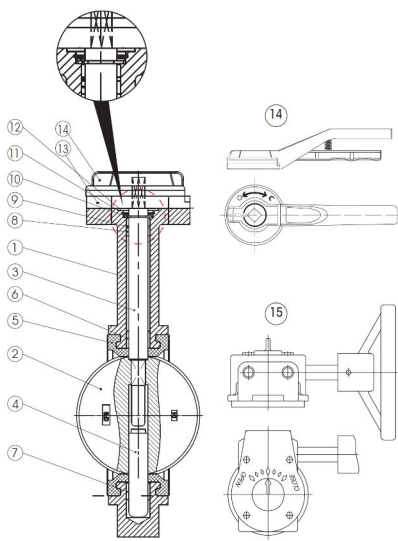
PN16 DN40 – DN300 (for fluids and not dangerous gas)  
PN16 DN40 – DN300 (for toxic gas, explosive, fuel)  
PN10 DN250 – DN300 (for dangerous gas, toxic gas, explosive, fuel)

## BUTTERFLY VALVES DN40 - DN300 ARTEMIS [ARS] / THESIS [THS]

### TEMPERATURE LIMITS WITH SEALING SEATS IN:

EPDM -20°C / +110°C for fluids  
 EPDM-HT -20°C / +130°C for fluids  
 NBR -20°C / +90°C for fluids  
 NBR -20°C / +60°C for gas  
 VITON -10°C / +160°C for fluids  
 VITON -10°C / +60°C for gas

### Construction: DN 350 - 500 [14" - 16"]

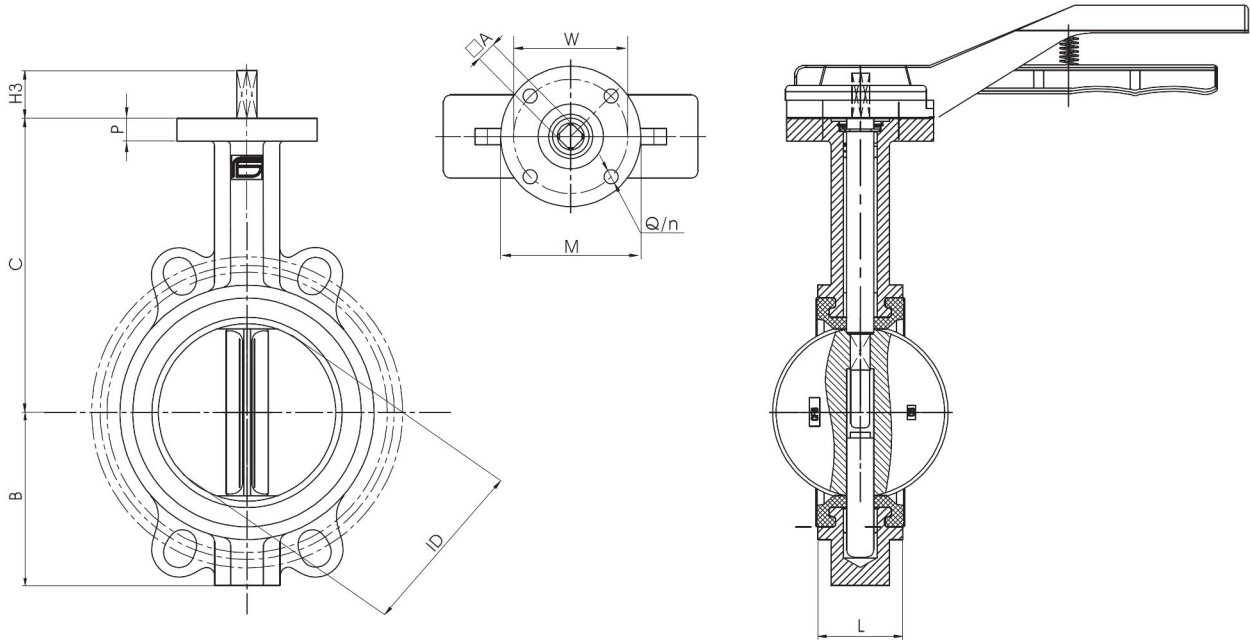


REF.	PART	Q.TY	MATERIALS							
			1	2	3	4	5	6	7	8
1	BODY	1	GG25	GG640	GG640	GG640	GG640	GG640	GG640	GG640
2	DISC	1	CF8	CF8M	CF8	GG640 NICK	CF8	CF8M	C958	CF8M
3	UPPER SHAFT	1	SS416	SS316	SS416	SS416	SS416	SS316	SS316	SS316
4	LOWER SHAFT	1	SS416	SS316	SS416	SS416	SS416	SS316	SS316	SS316
5	SEAT	1	EPDM	EPDM	EPDM-HT	EPDM	NBR	NBR	EPDM	VITON
6	LONG BUSHING	1	PTFE	PTFE	PTFE	PTFE	PTFE	PTFE	PTFE	PTFE
7	LONG BUSHING	1	PTFE	PTFE	PTFE	PTFE	PTFE	PTFE	PTFE	PTFE
8	SHORT BUSHING	2	PTFE	PTFE	PTFE	PTFE	PTFE	PTFE	PTFE	PTFE
9	O-RING	1	EPDM	EPDM	EPDM-HT	EPDM	NBR	NBR	EPDM	VITON
10	SPLIT WASHER	1	STEEL 65 Mn	STEEL 65 Mn	STEEL 65 Mn	STEEL 65 Mn	STEEL 65 Mn	STEEL 65 Mn	STEEL 65 Mn	STEEL 65 Mn
11	RETAINING RING	1	STEEL 65 Mn	STEEL 65 Mn	STEEL 65 Mn	STEEL 65 Mn	STEEL 65 Mn	STEEL 65 Mn	STEEL 65 Mn	STEEL 65 Mn
12	GASKET	1	Q235 AISI1010	Q235 AISI1010	Q235 AISI1010	Q235 AISI1010	Q235 AISI1010	Q235 AISI1010	Q235 AISI1010	Q235 AISI1010
13	TOOTH PLATE	1	CAST ALLUMIN.	CAST ALLUMIN.	CAST ALLUMIN.	CAST ALLUMIN.	CAST ALLUMIN.	CAST ALLUMIN.	CAST ALLUMIN.	CAST ALLUMIN.
14	HANDLE	1	CAST ALLUMIN.	CAST ALLUMIN.	CAST ALLUMIN.	CAST ALLUMIN.	CAST ALLUMIN.	CAST ALLUMIN.	CAST ALLUMIN.	CAST ALLUMIN.
15	REDUCTION GEAR	1	GG25	GG25	GG25	GG25	GG25	GG25	GG25	GG25

### Torque values - Nm | safety factor excluded

PN - bar	DN size	40 1"1/2	50 2"	65 2"1/2	80 3"	100 4"	125 5"	150 6"	200 8"	250 10"	300 12"
	0		11	14	18	27	40	59	88	157	248
6		11	20	25	32	41	62	92	173	275	382
10		12	23	27	34	54	71	106	186	321	551
16		14	25	29	37	56	86	123	262	392	576

**Dimensions**



SIZE	BODY					SHAFT			ISO5211 CONNECTION				* KG	
	ID	L	B	C	P	H3	□ A	ATT. ISO	M	W	n	Q		
1 1/2"	40	40	33	70	133	12	25	11	F07	90	70	4	10	2,7
2"	50	50	43	61	141	12	25	11	F07	90	70	4	10	2,9
2 1/2"	65	63	46	72	153	12	25	11	F07	90	70	4	10	4,1
3"	80	77	46	87	161	12	25	11	F07	90	70	4	10	4,4
4"	100	100	52	106	176	12	25	11	F07	90	70	4	10	4,7
5"	125	125	56	123	193	12	25	14	F07	90	70	4	10	6,3
6"	150	147	56	137	204	12	25	14	F07	90	70	4	10	7,9
8"	200	198	60	174	247	12	35	17	F10	125	102	4	12	12,3
10"	250	244	68	209	280	16	65	17	F10	125	102	4	12	19,5
12"	300	298	78	253	324	16	65	22	F10	125	102	4	12	30,5

\* Weights refer to valve with bare shaft.

SIZE	A	B	C	H	KG
1 1/2"	40	210	11	55	10,6
2"	50	210	11	55	10,6
2 1/2"	65	210	11	55	10,6
3"	80	210	11	55	10,6
4"	100	210	11	55	10,6
5"	125	210	14	55	10,6
6"	150	210	14	55	10,6
8"	200	340	17	70	12,7

SIZE DN	40	50	65
80	100		
125	150		
200			
250			
300			

## THESIS [THS] - Lug



Atex  II 2 GD\*  
\* on request

## MAIN STANDARD FEATURES

### CONSTRUCTION:

- **GENERAL SPECIFICATIONS:** BS EN 593 - (BS 5155) - MSS SP67 - API 609.
- **DIAMETERS:** DN40 - DN300.
- **CONNECTION WITH FLANGES UNI EN 1092:**  
PN6 - PN10 - PN16 DN40 - DN300
- **CONNECTION WITH FLANGES ANSI 150:**  
DN40 - DN300.
- **FACE TO FACE DIMENSIONS IN CONFORMITY WITH:**  
BS EN 558 - ISO5752 - MSS SP67 - API609 - DIN3202/3-K1.
- **TOP FLANGE:** drilling ISO5211.
  
- **OPERATION DEVICE:** lever DN40 - DN200,  
gear DN250 - DN300.
- Tested for vacuum at 900mbar.

## MAXIMUM WORKING PRESSURE

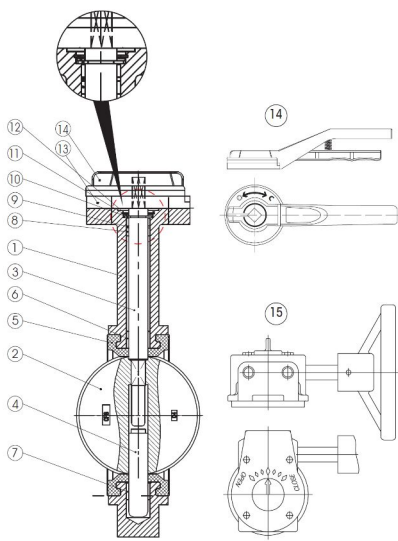
PN16 DN40 - DN150  
PN10 DN200 - DN300  
PN16 DN200-DN300

## BUTTERFLY VALVES DN40 - DN300 ARTEMIS [ARS] / THESIS [THS]

### TEMPERATURE LIMITS WITH SEALING SEATS IN:

EPDM -20°C / +110°C for fluids  
 EPDM-HT -20°C / +130°C for fluids  
 NBR -20°C / +90°C for fluids  
 NBR -20°C / +60°C for gas  
 VITON -10°C / +160°C for fluids  
 VITON -10°C / +60°C for gas

### Construction: DN 350 - 500 [14" - 16"]



REF.	PART	Q.TY	MATERIALS							
			GG25	GG640	GG640	GG640	GG640	GG640	GG640	GG640
1	BODY	1	GG25	GG640	GG640	GG640	GG640	GG640	GG640	GG640
2	DISC	1	CF8	CF8M	CF8	GG640 NICK	CF8	CF8M	C958	CF8M
3	UPPER SHAFT	1	SS416	SS316	SS416	SS416	SS416	SS316	SS316	SS316
4	LOWER SHAFT	1	SS416	SS316	SS416	SS416	SS416	SS316	SS316	SS316
5	SEAT	1	EPDM	EPDM	EPDM-HT	EPDM	NBR	NBR	EPDM	VITON
6	LONG BUSHING	1	PTFE	PTFE	PTFE	PTFE	PTFE	PTFE	PTFE	PTFE
7	LONG BUSHING	1	PTFE	PTFE	PTFE	PTFE	PTFE	PTFE	PTFE	PTFE
8	SHORT BUSHING	2	PTFE	PTFE	PTFE	PTFE	PTFE	PTFE	PTFE	PTFE
9	O-RING	1	EPDM	EPDM	EPDM-HT	EPDM	NBR	NBR	EPDM	VITON
10	SPLIT WASHER	1	STEEL 65 Mn	STEEL 65 Mn	STEEL 65 Mn	STEEL 65 Mn	STEEL 65 Mn	STEEL 65 Mn	STEEL 65 Mn	STEEL 65 Mn
11	RETAINING RING	1	STEEL 65 Mn	STEEL 65 Mn	STEEL 65 Mn	STEEL 65 Mn	STEEL 65 Mn	STEEL 65 Mn	STEEL 65 Mn	STEEL 65 Mn
12	GASKET	1	Q235 AISI1010	Q235 AISI1010	Q235 AISI1010	Q235 AISI1010	Q235 AISI1010	Q235 AISI1010	Q235 AISI1010	Q235 AISI1010
13	TOOTH PLATE	1	CAST ALLUMIN.	CAST ALLUMIN.	CAST ALLUMIN.	CAST ALLUMIN.	CAST ALLUMIN.	CAST ALLUMIN.	CAST ALLUMIN.	CAST ALLUMIN.
14	HANDLE	1	CAST ALLUMIN.	CAST ALLUMIN.	CAST ALLUMIN.	CAST ALLUMIN.	CAST ALLUMIN.	CAST ALLUMIN.	CAST ALLUMIN.	CAST ALLUMIN.
15	REDUCTION GEAR	1	GG25	GG25	GG25	GG25	GG25	GG25	GG25	GG25

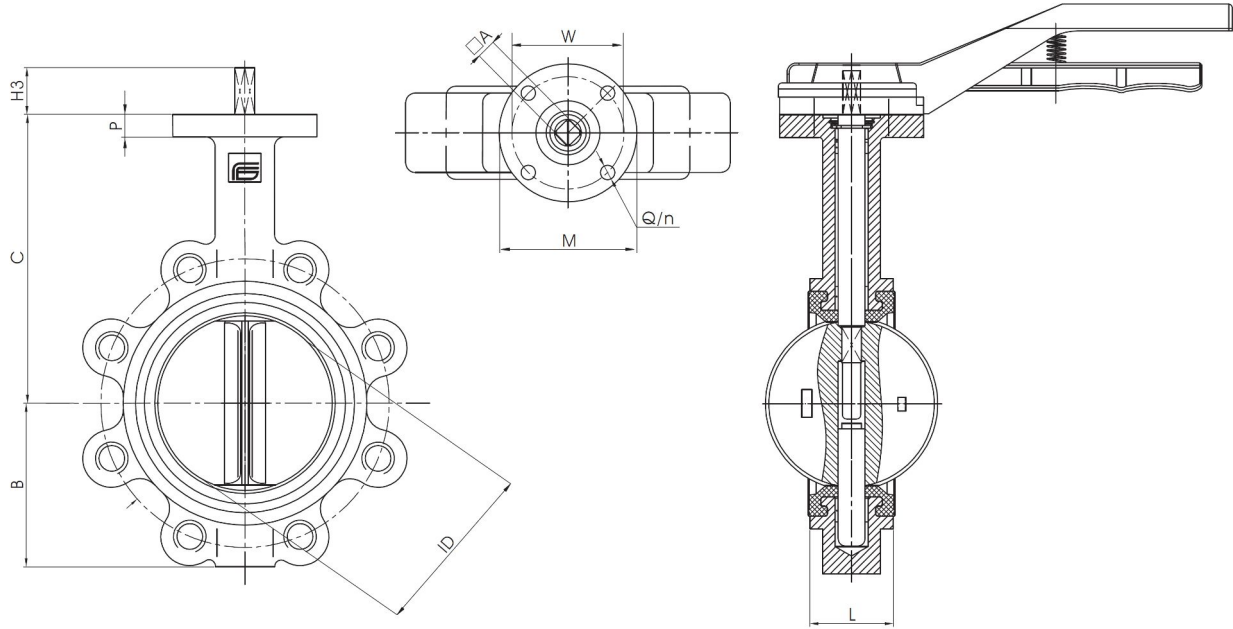
### Torque values - Nm | safety factor excluded

PN - bar	DN size	40 1"1/2	50 2"	65 2"1/2	80 3"	100 4"	125 5"	150 6"	200 8"	250 10"	300 12"
	0		11	14	18	27	40	59	88	157	248
6		11	20	25	32	41	62	92	173	275	382
10		12	23	27	34	54	71	106	186	321	551
16		14	25	29	37	56	86	123	262	392	576



**BUTTERFLY VALVES DN40 - DN300**  
**ARTEMIS [ARS] / THESIS [THS]**

**Dimensions**



SIZE	BODY					SHAFT		ISO5211 CONNECTION				*	
	ID	L	B	C	P	H3	□ A	ATT. ISO	M	W	n		Q
1"1/2	40	33	70	133	12	25	11	F07	90	70	4	10	3
2"	50	43	61	141	12	25	11	F07	90	70	4	10	3,5
2"1/2	65	46	72	153	12	25	11	F07	90	70	4	10	4,7
3"	80	46	87	161	12	25	11	F07	90	70	4	10	5
4"	100	52	106	176	12	25	11	F07	90	70	4	10	5,5
5"	125	56	123	193	12	25	14	F07	90	70	4	10	7
6"	150	56	137	204	12	25	14	F07	90	70	4	10	9
8"	200	60	174	247	12	35	17	F10	125	102	4	12	13,3
10"	250	68	209	280	16	65	17	F10	125	102	4	12	21
12"	300	78	253	324	16	65	22	F10	125	102	4	12	32

\* Weights refer to valve with bare shaft.

SIZE	A	B	C	H	KG	
1"1/2	40	210	11	55	10	0,6
2"	50	210	11	55	10	0,6
2"1/2	65	210	11	55	10	0,6
3"	80	210	11	55	10	0,6
4"	100	210	11	55	10	0,6
5"	125	210	14	55	10	0,6
6"	150	210	14	55	10	0,6
8"	200	340	17	70	12	0,7

SIZE DN	40	50	65
80	100		
125	150		
200			
250			
300			

### PEŁEN OBSZAR DZIAŁALNOŚCI:

- Ścieżki gazowe do instalacji palnikowych
- Kompletnie systemy detekcji gazu
- Zawory do systemów detekcji gazu **do średnicy DN300**
- Zawory kulowe
- Zawory zwrotne
- Elektrozwory m.in.: procesowe, do pary i kriogeniki, wysokociśnieniowe do 500bar
- Przepustnice procesowe
- Przepustnice regulacyjne
- Przepustnice wysokotemperaturowe do gazów i spalin
- Filtry procesowe
- Filtry do gazu/ biogazu/ gazu koksowniczego (COG)
- Napędy: pneumatyczne, elektryczne, serwo-wspomagane



### ZASTOSOWANIE:

- woda, para i kondensat
- chemia oraz media agresywne
- gazy neutralne
- gazy agresywne: **biogaz i gaz koksowniczy**
- systemy olejowe
- spr. powietrze oraz ukł. podciśnienia
- kriogenika
- instalacje palnikowe i rozpałkowe w kotłach



### NOTES:

The valves presented in this catalog are manufactured in the EU  
by Gibson Italia srl. according to specifications:

